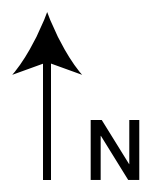


THE CITY OF  
**LAPEER**  
MICHIGAN

- - - - - Demille Bowl (Green - 0.75 Miles)
- - - - - Cemetery Loop (Blue - 1.7 Miles)
- - - - - South Loop (Red - 1.7 Miles)
- - - - - Osprey Trail (Brown - 1.0 Miles)
- - - - - Connectors (Orange)
- - - - - Other Trails / Paths
- Multi-Use Path (Paved)
- Road / Parking
- Railroad
- Water
- Fence
- P Parking
- Point of Interest



1/8 Mile

All trails are non-directional.  
Bicycles yield to foot traffic.  
Downhill traffic yield to uphill traffic.  
Do not ride or walk trails when wet or muddy.



# City of Lapeer Oakdale Trails Map

